

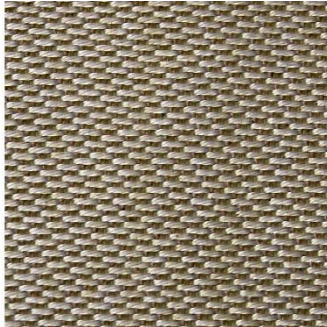
HOT CLOTH

What is it?

“Hot Cloth” is a fabric made from woven silica fibers. It’s available in a fine weave with a texture like linen and in a medium weave with a texture like burlap.



Fine Weave



Medium Weave

How to Use “Hot Cloth”

- Used as a separator to imprint texture onto glass.
- Does NOT stick to glass and does not require kiln wash or any separator.
- Does NOT need to be pre-fired.
- Can be fired to either tack fuse or full fuse.
- Stands up to extensive reuse.
- Can be fired as high as 2000°F (1095°C) but will begin to break down when fired above 1800°F (980°C)

Glass fired onto different textured “Hot Cloth” imprints different texture into the glass.

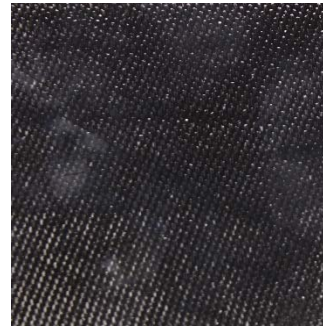


On fine weave



On Medium Weave

Glass placed on “Hot Cloth” and fired to tack fuse will imprint part of the texture but if fired to full fuse will imprint the full texture of the cloth.

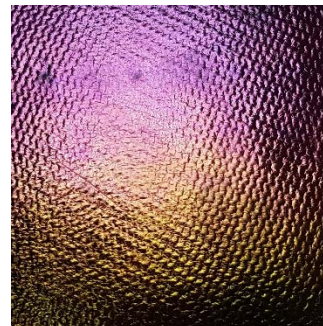


Tack Fuse Firing



Full Fuse Firing

Metallic iridescent or luminescent glass firing onto “Hot Cloth” produces an especially attractive look.



**SPECTRUM
Iridescent Black**



**WISSMACH
Luminescent Blue**

Safety

“Hot Glass” is non-carcinogenic and requires no special handling.

Handling

“Hot Glass” cuts easily with good scissors or a fabric roller knife. It should be store flat or rolled. Avoid folding. Folds will remain in the cloth and will show in any glass fired on it.