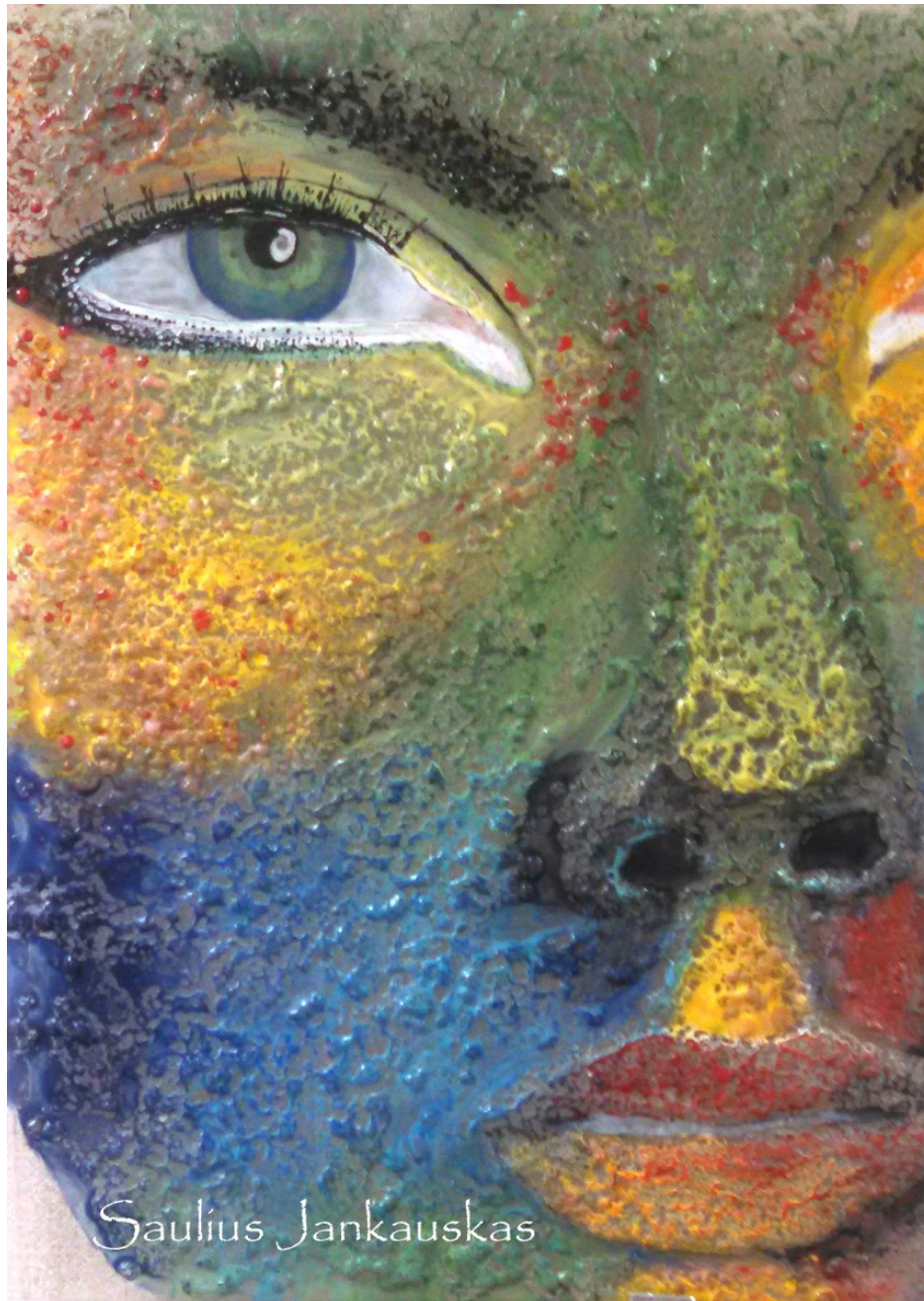


# Sculpted Frit Face



Base glass is 17.5" x 19" and 1/4" thick. Mix coarse and fine frit with Layering Mix to a paste consistency. Build up the design to create the desired dimension. Let dry 24 hours. Base color all over is 1995 Apple Green NT over the dried frit. Let dry 24 hours. Start apply desired colors over the green base blending as you go. Black and White Outline used around eye area for dimension and NT Colors used for eye detail. Spots of red around cheek and eye area are created with coarse frit mixed with red, allowed to dry and then sprinkled on the surface. Let dry. Float glass used in this example so firing schedule is for float glass.

200 - 1000—hold 10

9999 - 1490—hold 15

9999 - 1000—hold 20

150 - 850 - hold 45

9999-room temperature